

# ALASKA STATE PARKS

## TRAIL MANAGEMENT HANDBOOK

MAY 2015

### APPENDIX D: MAPPING SOFTWARE SETTINGS



**Appendix D: Mapping Software Settings .....2**

Figure D.1 – Setup Window ..... 2

Figure D.2 – Logging Settings Window ..... 3

Figure D.3 – Accuracy Settings Window ..... 3

Figure D.4 - Antenna Settings Window ..... 4

Figure D.5 – GPS Settings Window ..... 4

Figure D.6 – Real-time Settings Window..... 5

Figure D.7 – Integrated Beacon Settings Window ..... 5

Figure D.8 – Coordinate System Window..... 6

Figure D.9 – Units Window..... 6

Figure D.10 – External Sensors Window ..... 7

Figure D.11 – Export Main Window ..... 7

Figure D.12 – Data Window..... 8

Figure D.13 – Output Window ..... 8

Figure D.14 – Attributes Window 1 ..... 9

Figure D.15 - Attributes Window 2..... 9

Figure D.16 – Units Window..... 10

Figure D.18 – Coordinate System Window..... 11

Figure D.19 – ESRI Shapefile Window ..... 11

Figure D.20 – Attributes Window 1 ..... 12

Figure D.21 – Attributes Window ..... 13

## Appendix D: Mapping Software Settings

The following are settings currently used by State Parks as of 2/15/13. Updates in Trimble TerraSync and GPS Pathfinder Office may alter available settings in the future; if this is the case the following settings can still be used as a starting point. To keep data consistent, the Trimble GPS Pathfinder software platform should be used.

The following screen shots are from Trimble TerraSync software (version 3.30) and Trimble GPS Pathfinder Office software (version 5.10), respectively.

### D.1 Trimble TerraSync Settings

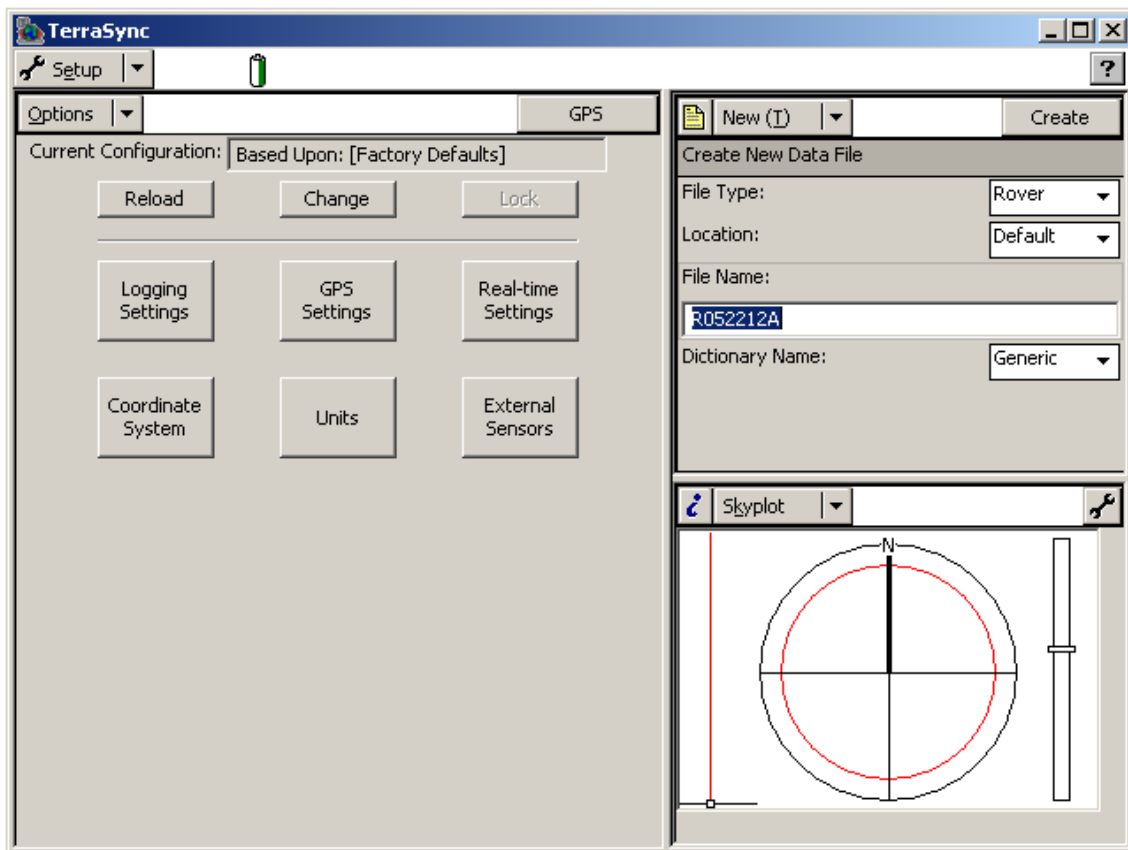
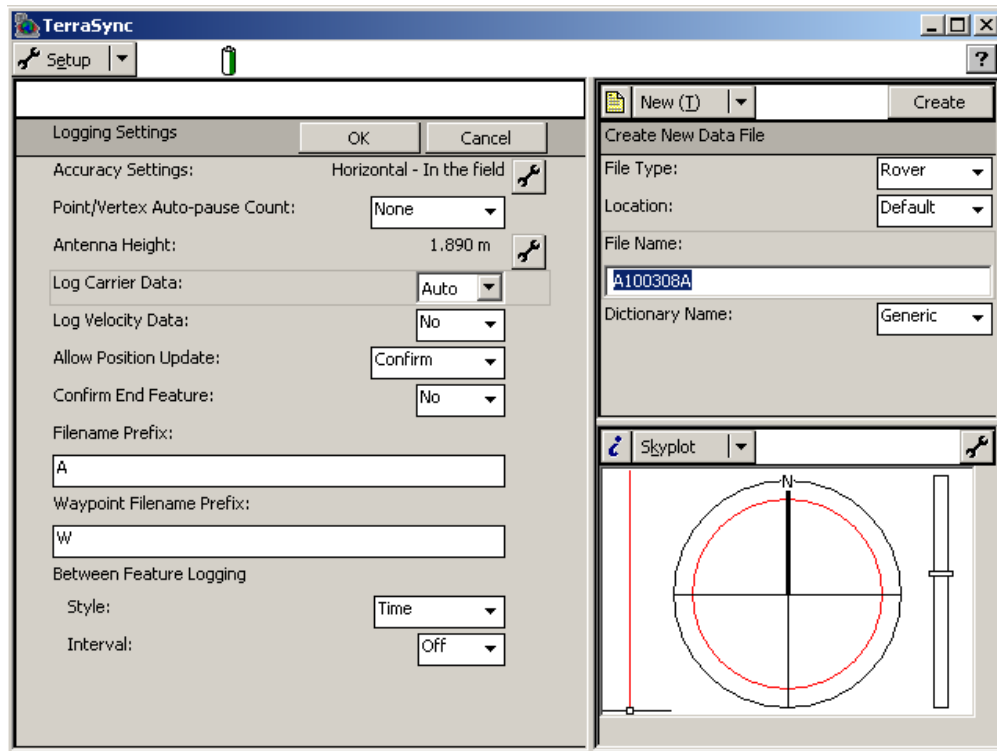
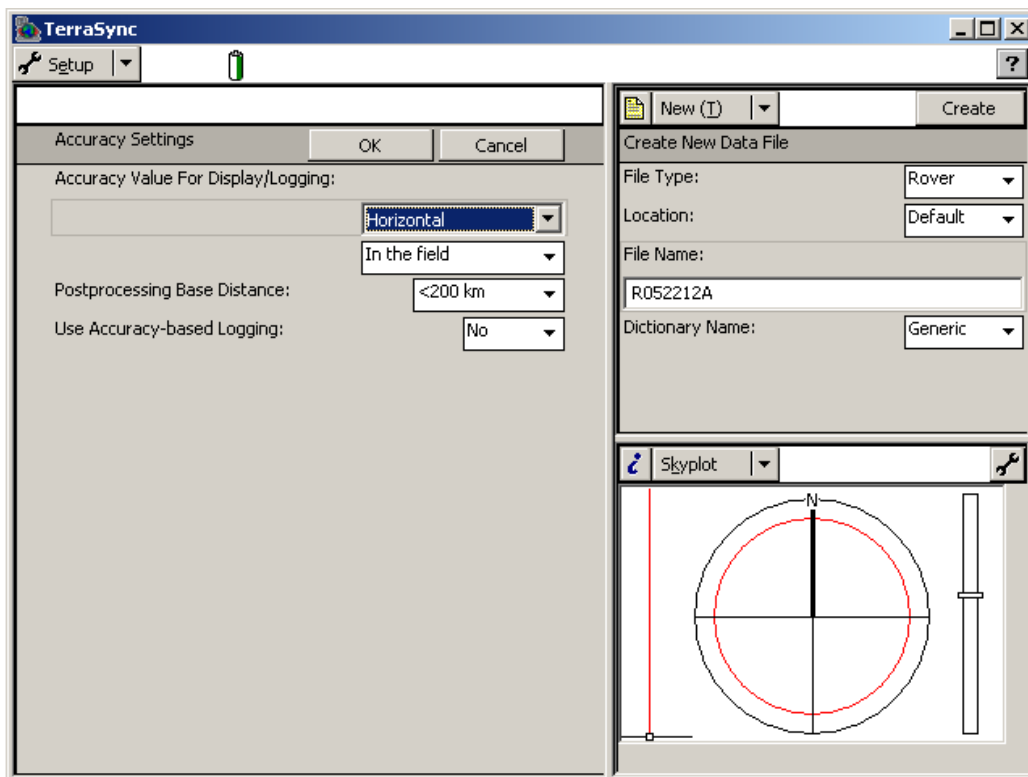


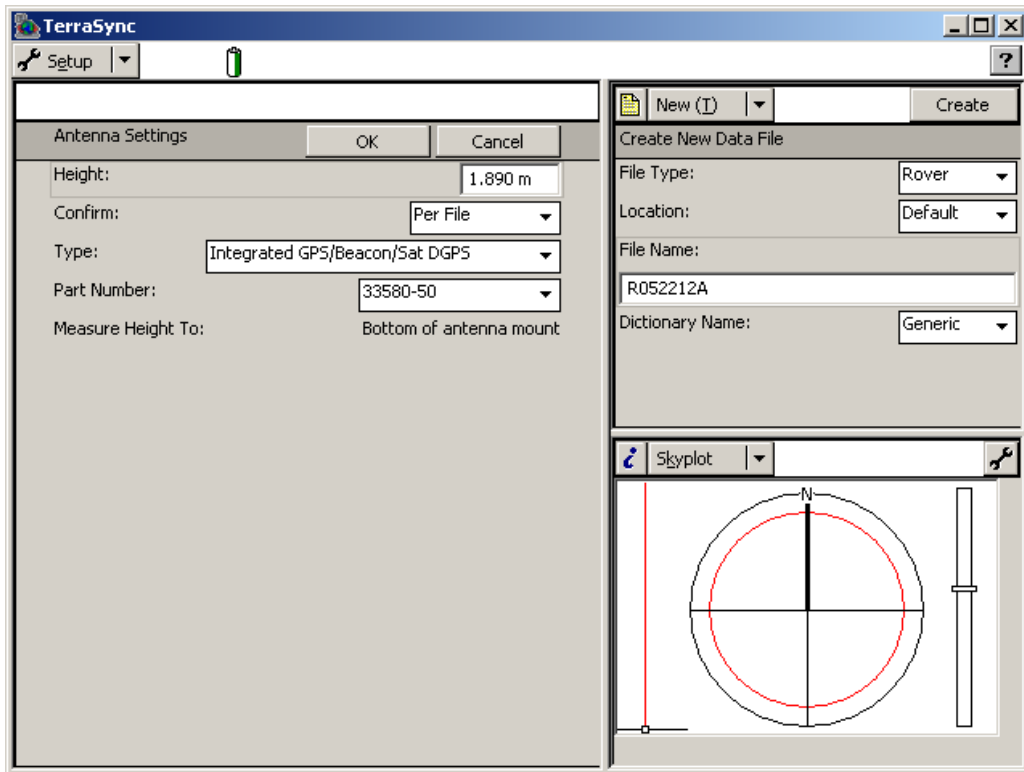
Figure D.1 – Setup Window



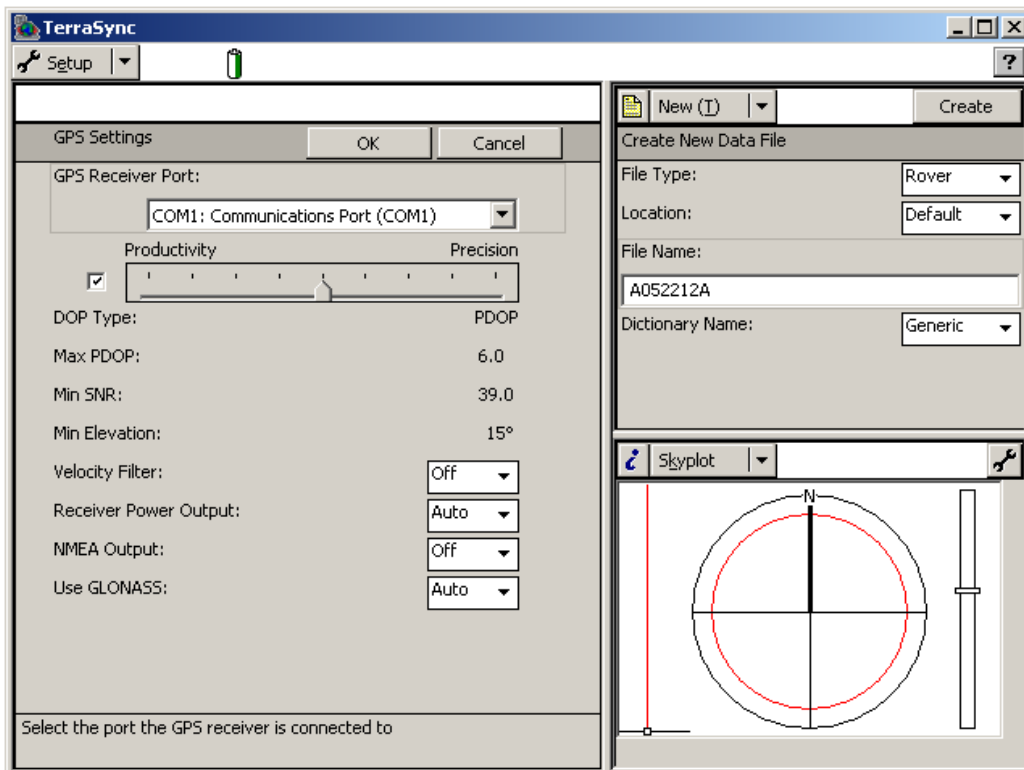
**Figure D.2 – Logging Settings Window**



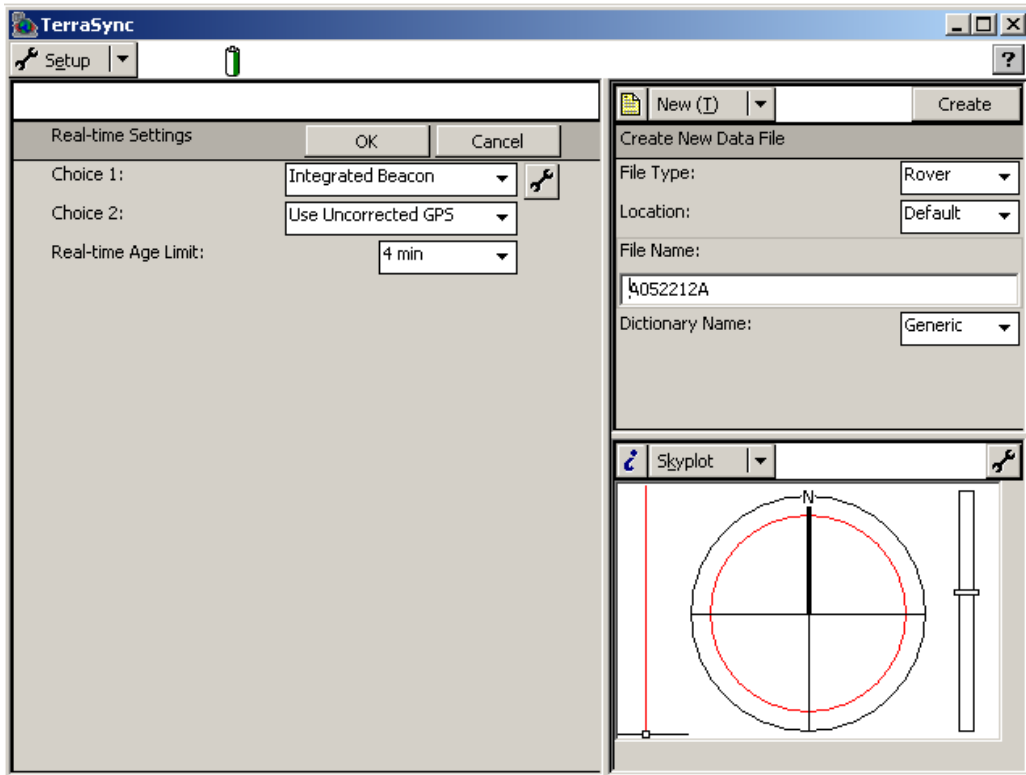
**Figure D.3 – Accuracy Settings Window**



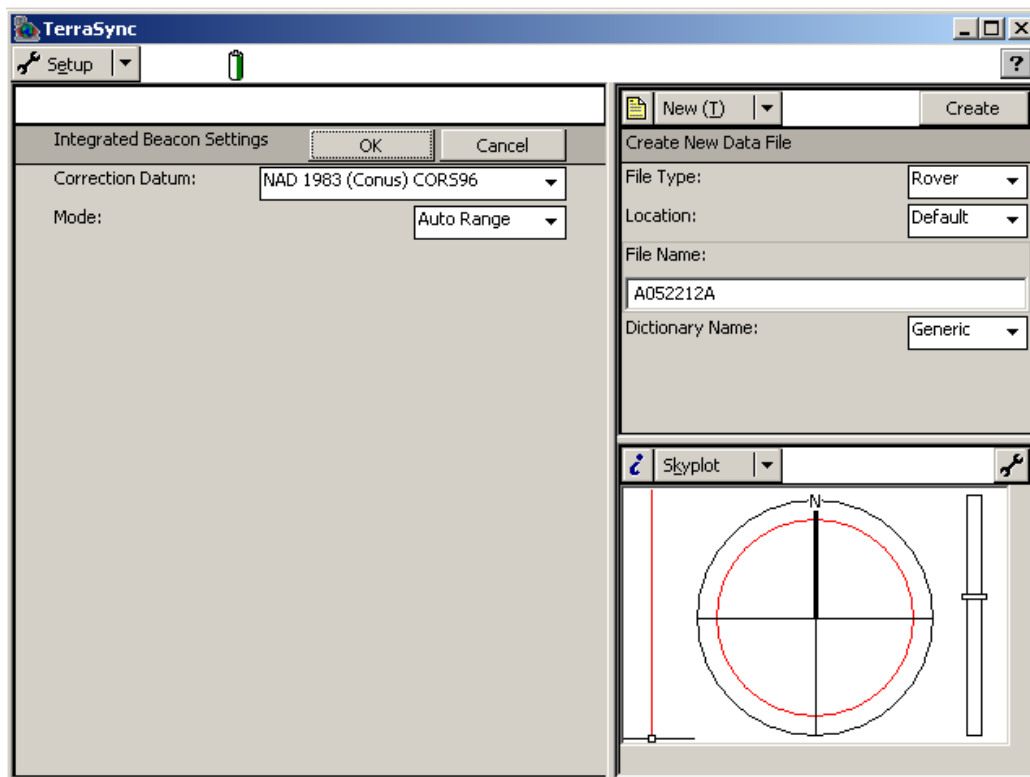
**Figure D.4 - Antenna Settings Window**



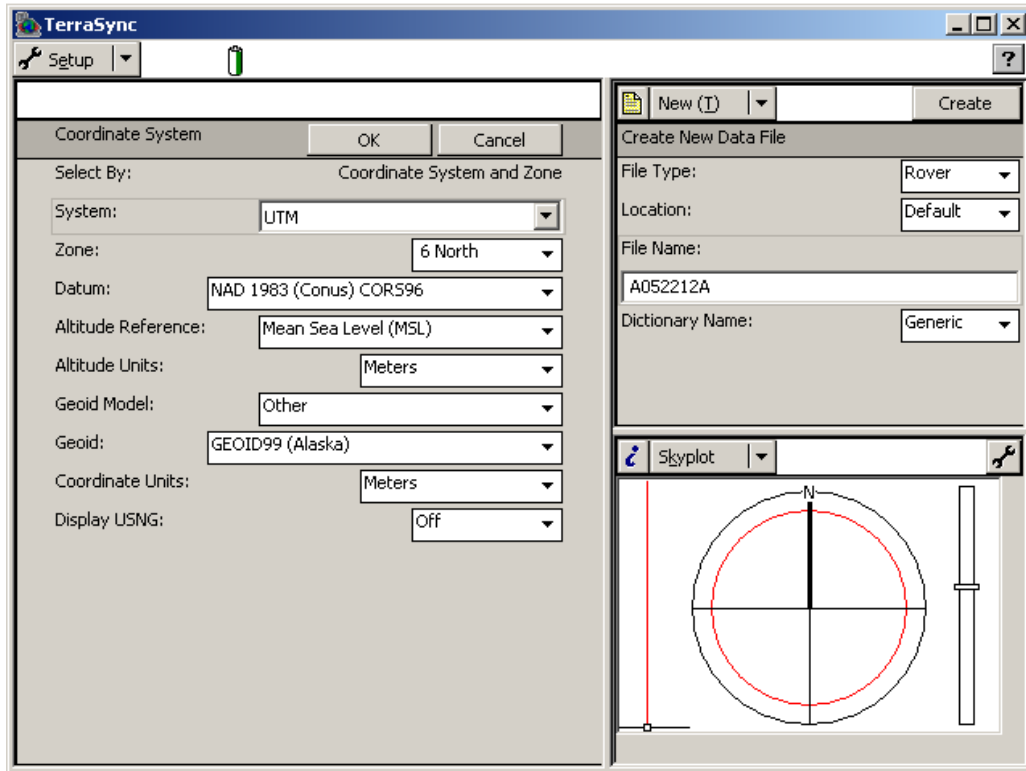
**Figure D.5 – GPS Settings Window**



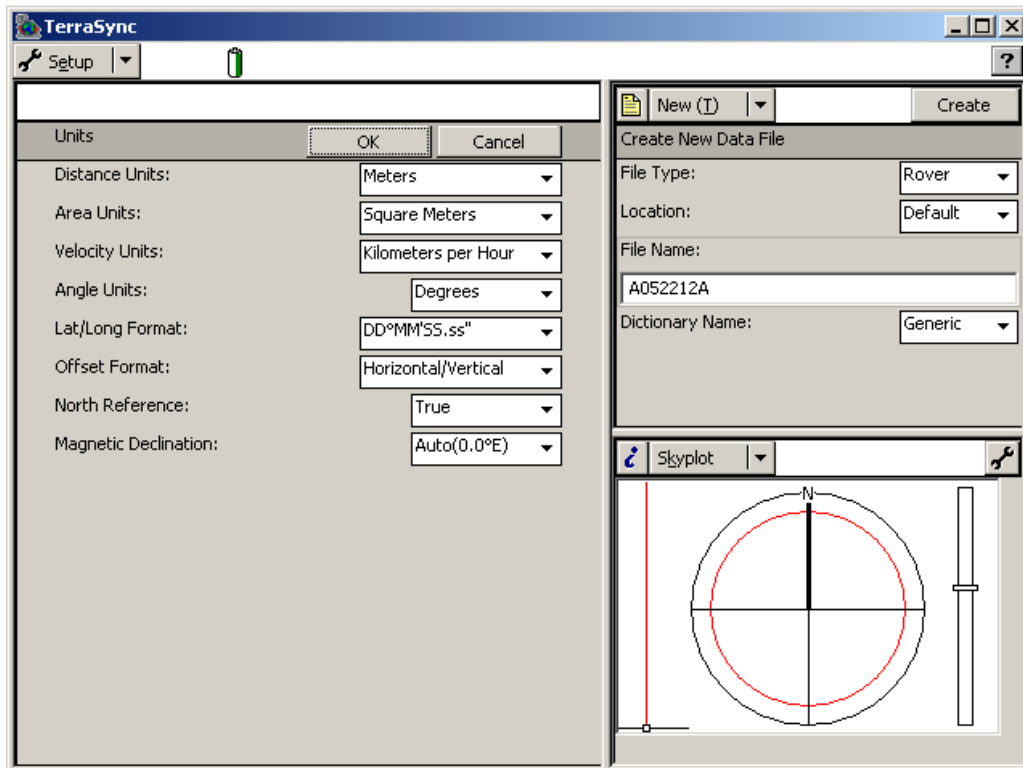
**Figure D.6 – Real-time Settings Window**



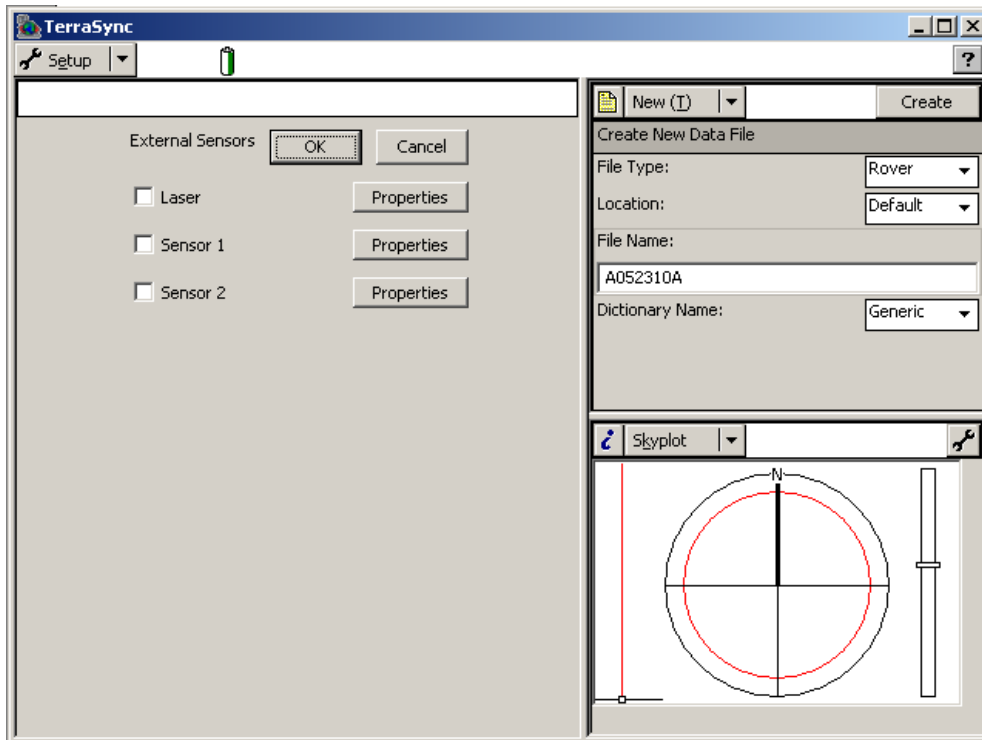
**Figure D.7 – Integrated Beacon Settings Window**



**Figure D.8 – Coordinate System Window**

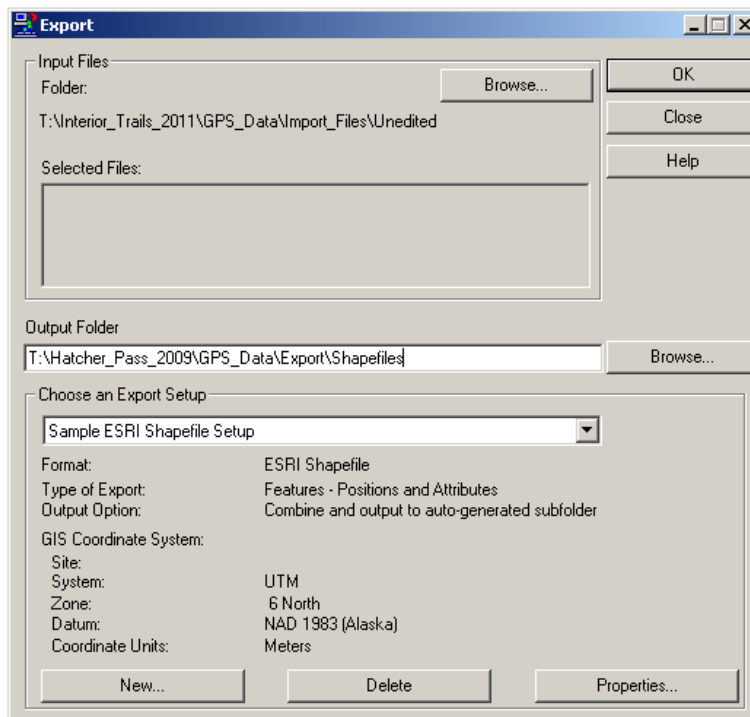


**Figure D.9 – Units Window**



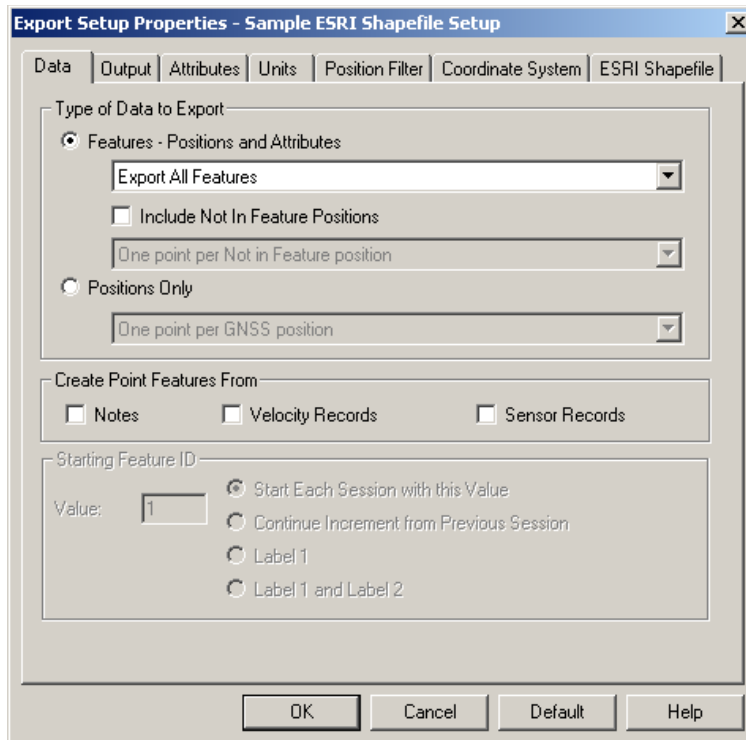
**Figure D.10 – External Sensors Window**

## ***D.2 Trimble GPS Pathfinder Office Export Settings***

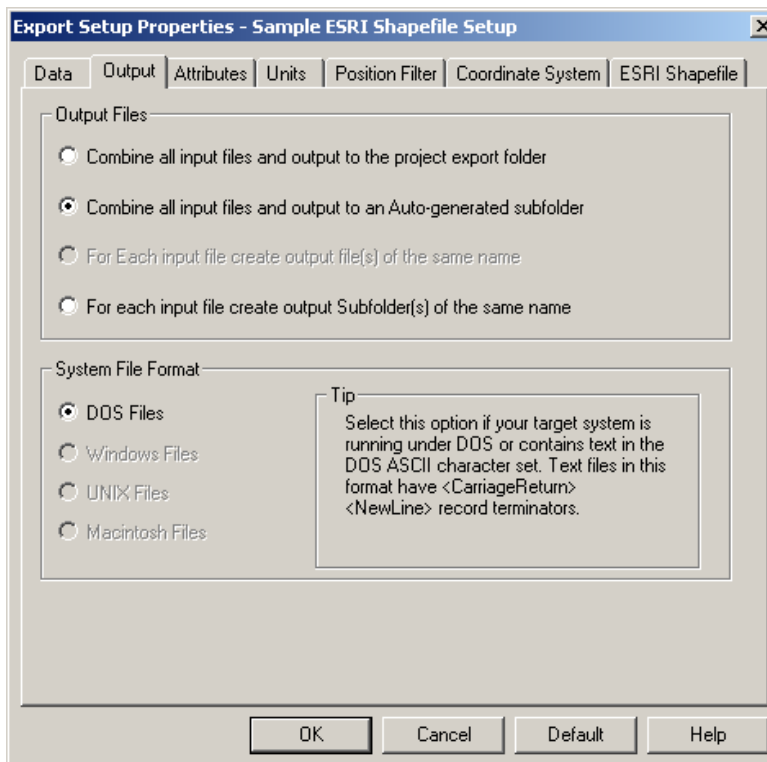


**Figure D.11 – Export Main Window**

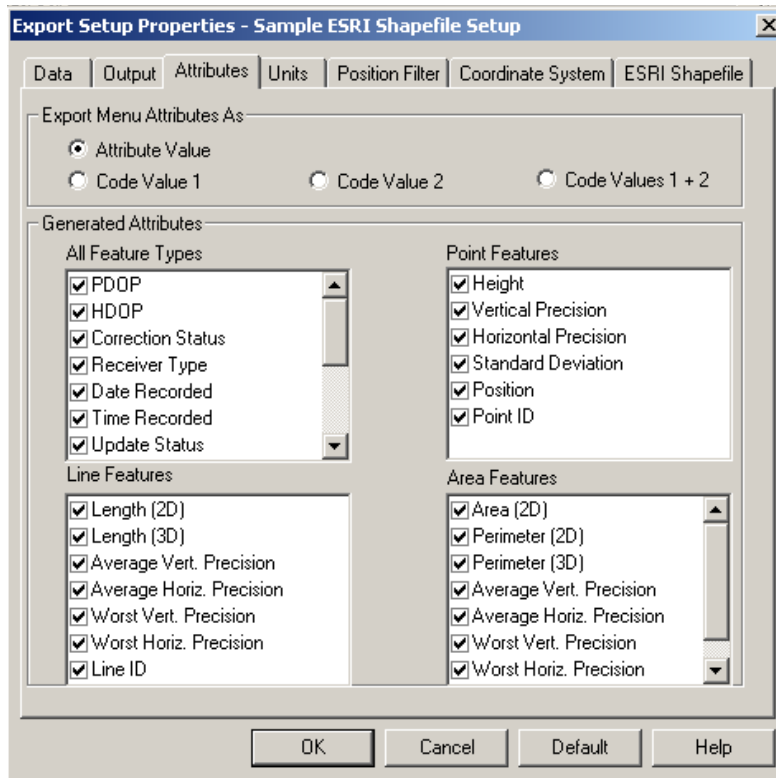




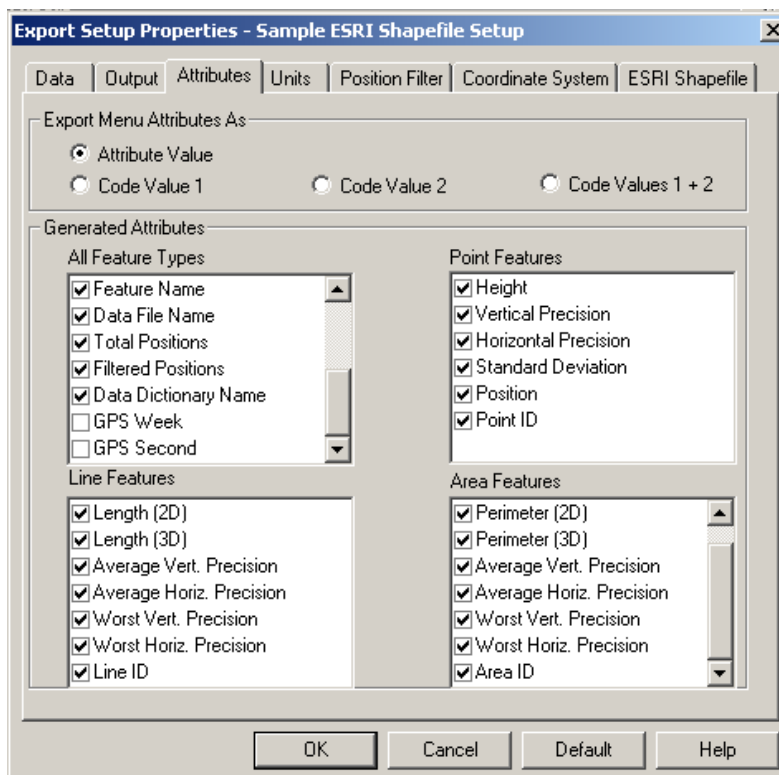
**Figure D.12 – Data Window**



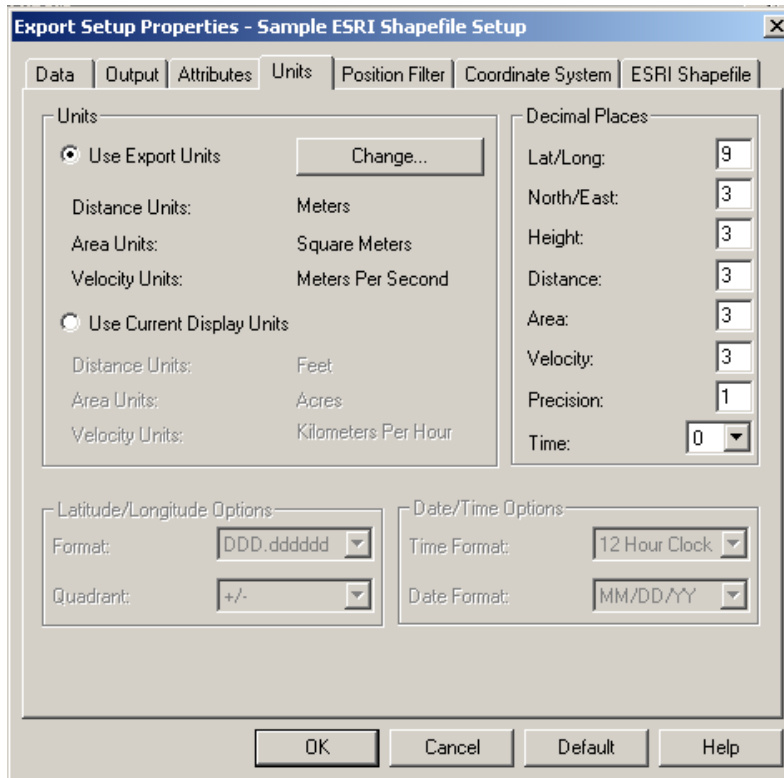
**Figure D.13 – Output Window**



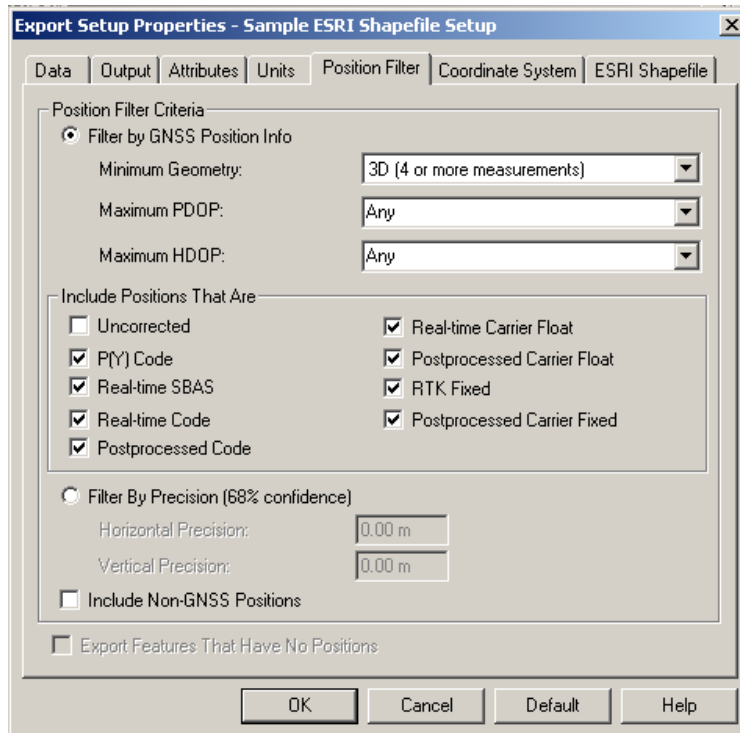
**Figure D.14 – Attributes Window 1**



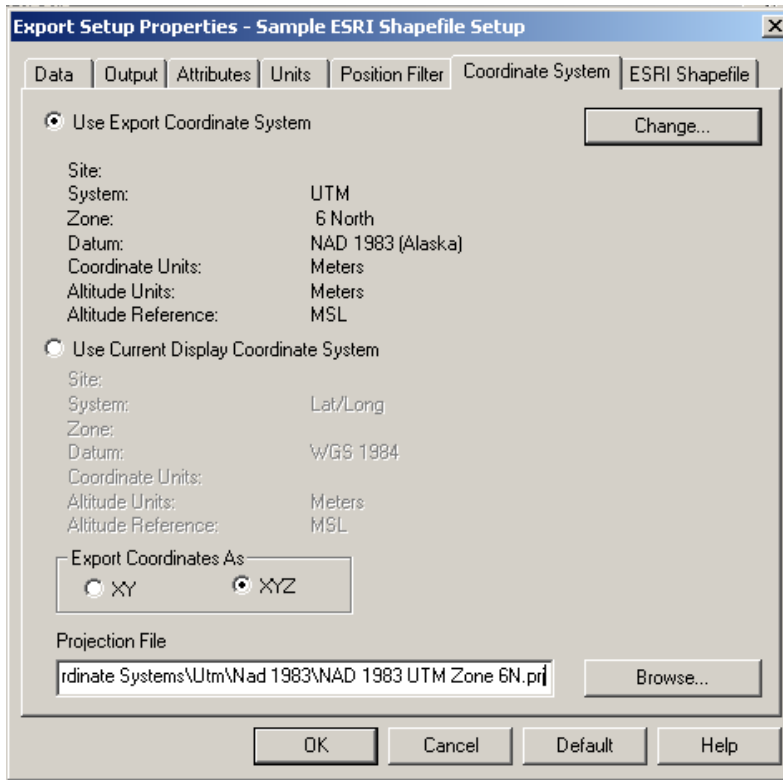
**Figure D.15 - Attributes Window 2**



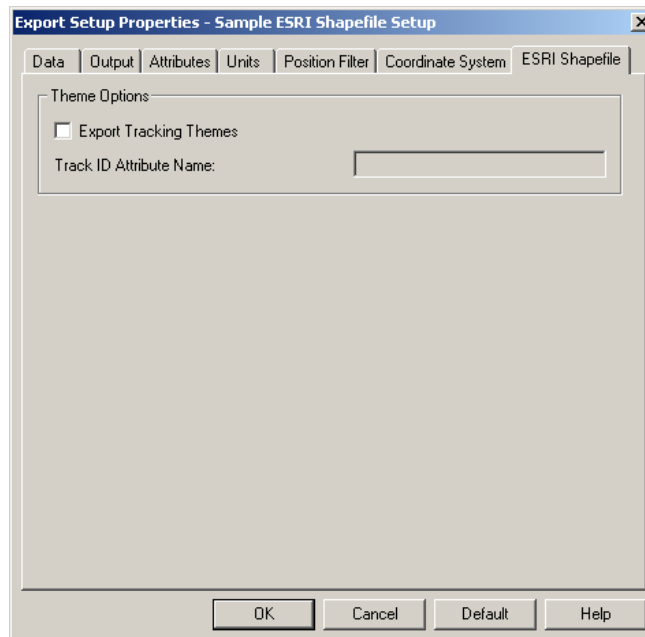
**Figure D.16 – Units Window**



**Figure D.17 – Position Filter Window**



**Figure D.18 – Coordinate System Window**



**Figure D.19 – ESRI Shapefile Window**

### D.3 Trimble GPS Pathfinder Office GPS-Photo Link Export Settings

The only settings that differ from the previous export settings are in the Attributes tab.

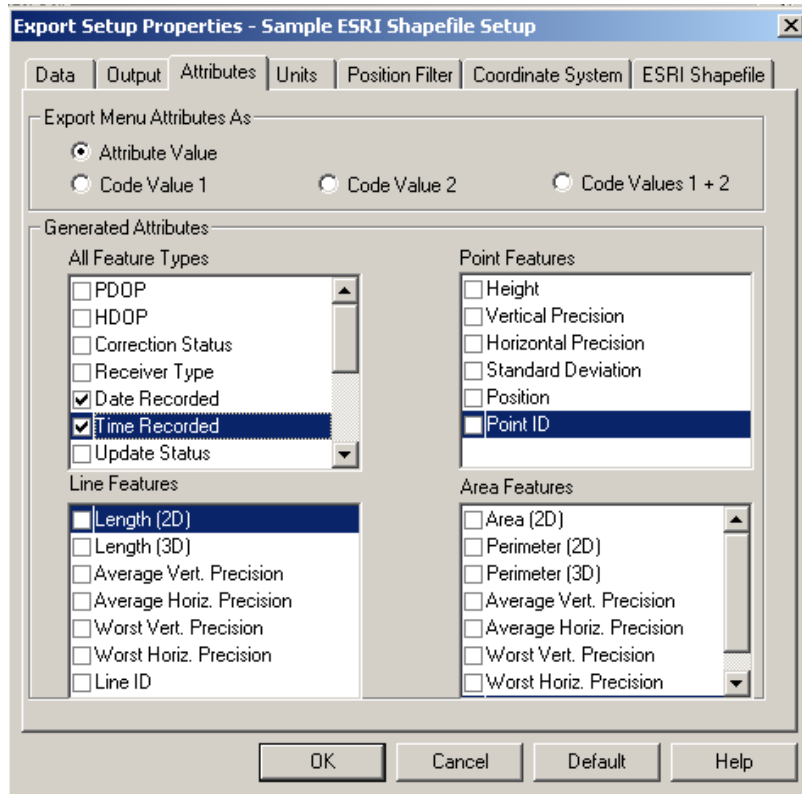
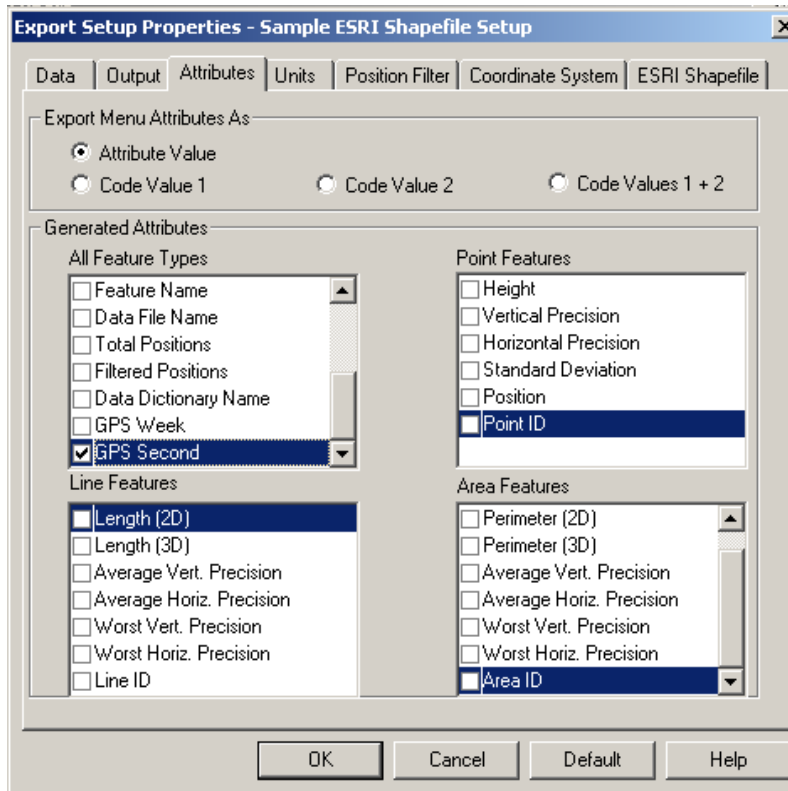


Figure D.20 – Attributes Window 1



**Figure D.21 – Attributes Window**